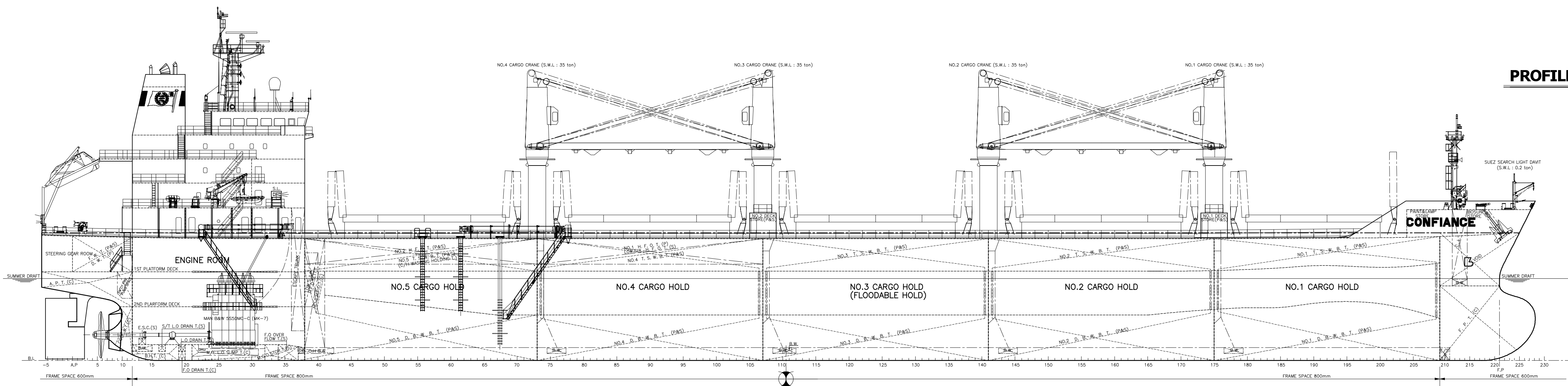
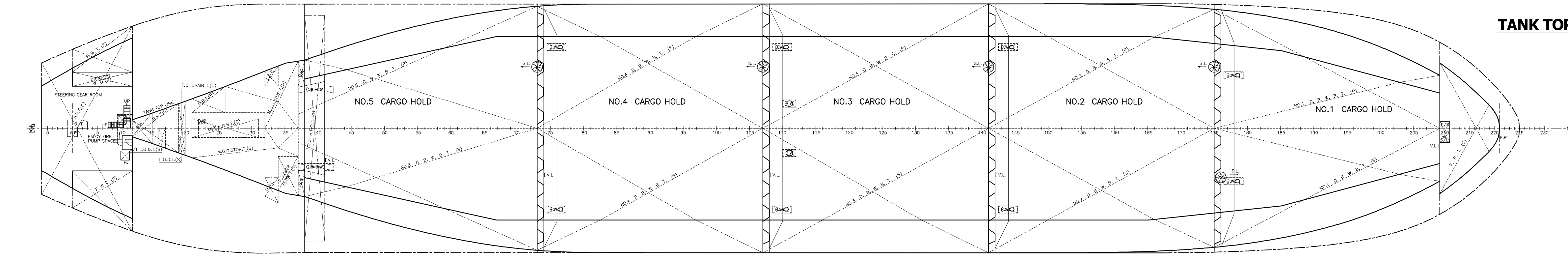


CAPACITY PLAN WITH DWT SCALE

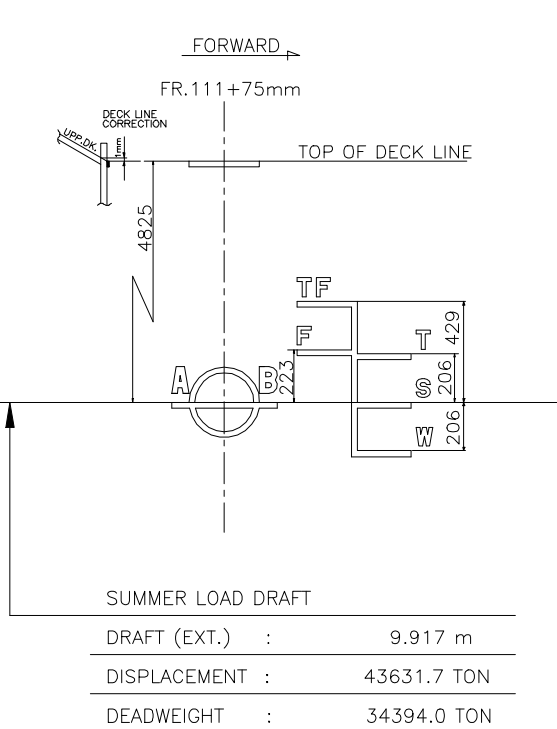
PLAN HISTORY			
DATE	REV.	DESCRIPTION	REMARK
2011.09.01	A	FINAL DRAWING For Hull No H-4038	



PROFILE

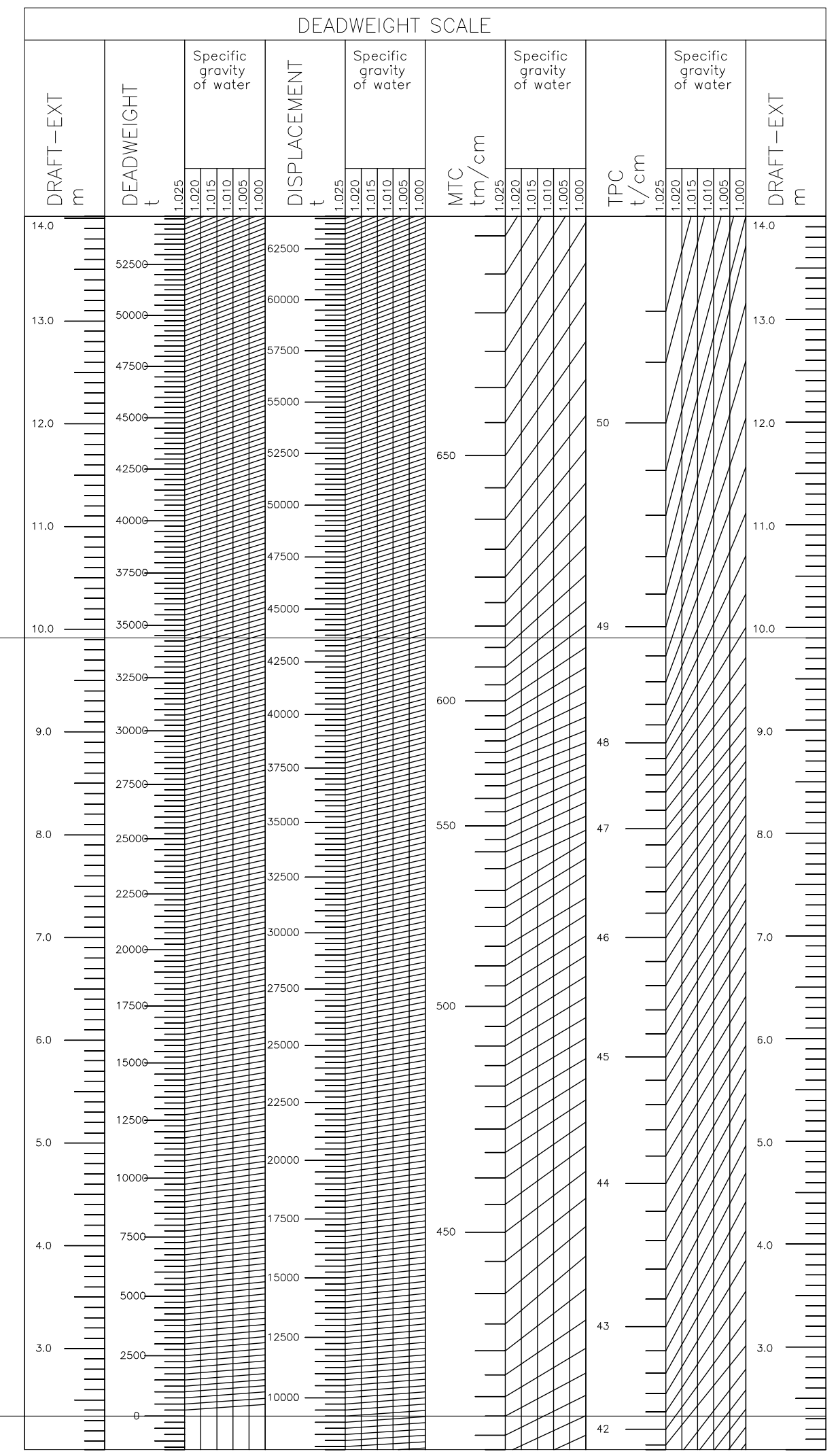


TANK TOP

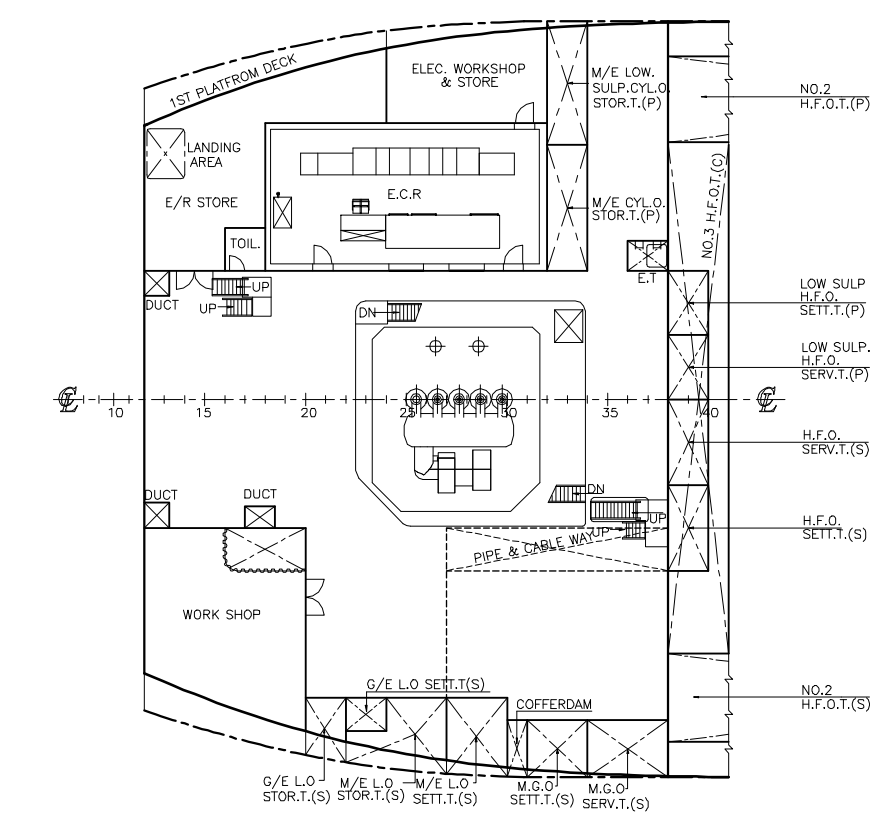


SUMMER LOAD DRAFT
 DRAFT (EXT.) : 9.917 m
 DISPLACEMENT : 43631.7 TON
 DEADWEIGHT : 34394.0 TON

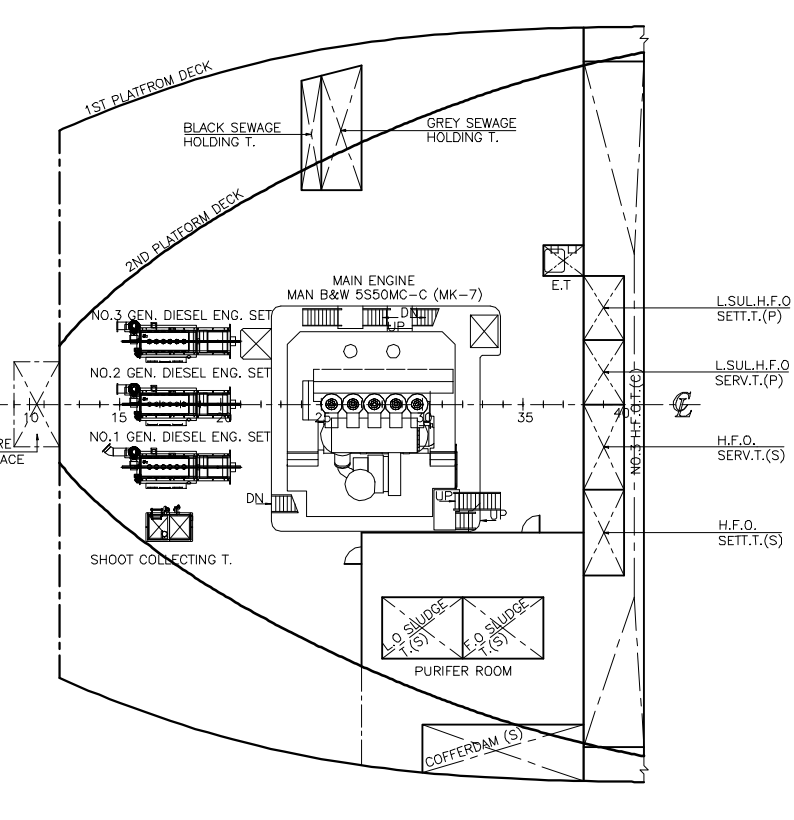
LIGHTWEIGHT DRAFT
 DRAFT (EXT.) : 2.341 m
 DISPLACEMENT : 9237.7 TON



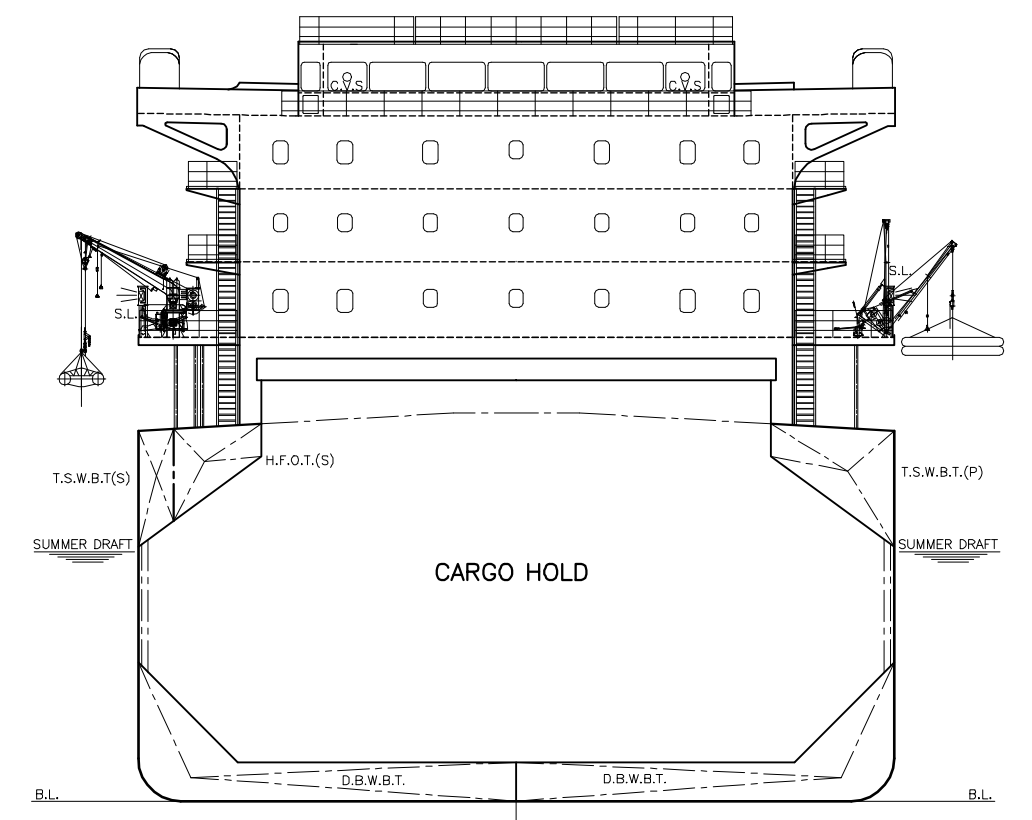
1ST PLATFORM DECK



2ND PLATFORM DECK



MIDSHIP SECTION



FREEBOARD PARTICULARS				
FREEBOARD (mm)		DRAFT (EXT.) (m)	DISPLACEMENT (ton)	DEADWEIGHT (ton)
TROPICAL FRESH	TF	4396	10,346	44,621.2
FRESH	F	4602	10,140	43,633.6
TROPICAL	T	4619	10,123	44,641.0
SUMMER	S	4825	9,917	43,631.7
WINTER	W	5031	9,711	42,625.3

CARGO HOLD					
COMPARTMENT	LOCATION (FRAME)	CAPACITY (m³)		L.C.G. (m)	V.C.G. (m)
		100%FULL	BALE CAPACITY (m³)		
NO.1 CARGO HOLD (C)	175 - 209	8370.1	7961.3	64.339	8.890
NO.2 CARGO HOLD (C)	141 - 175	10263.1	9818.7	38.448	8.692
NO.3 CARGO HOLD (C)	107 - 141	10294.6	9825.7	11.281	8.679
NO.4 CARGO HOLD (C)	73 - 107	10306.0	9841.4	-15.934	8.685
NO.5 CARGO HOLD (C)	41 - 73	9532.0	9207.8	-42.417	8.877
SUB. T O T A L		48765.8	46654.9		

WATER BALLAST TANKS						
COMPARTMENT	LOCATION (FRAME)	CAPACITY (m³)		L.C.G. (m)	V.C.G. (m)	I.T. (m⁴)
		100%FULL	WEIGHT (ton)			
F. P. T. (C)	209 - F.E	700.7	718.2	82.473	4.816	1029
NO.1 T.S.&D.B.W. B. T. (P)	175 - 209	1016.9	1042.3	64.341	5.294	4100
NO.1 T.S.&D.B.W. B. T. (S)	175 - 209	1016.9	1042.3	64.341	5.294	4100
NO.2 T.S.&D.B.W. B. T. (P)	141 - 175	1156.2	1185.1	38.021	4.919	7444
NO.2 T.S.&D.B.W. B. T. (S)	141 - 175	1156.2	1185.1	38.021	4.919	7444
NO.3 T.S.&D.B.W. B. T. (P)	107 - 141	1156.8	1185.7	10.812	4.898	7629
NO.3 T.S.&D.B.W. B. T. (S)	107 - 141	1156.8	1185.7	10.812	4.898	7629
NO.4 T.S.&D.B.W. B. T. (P)	73 - 107	942.4	966.0	-16.333	2.966	7584
NO.4 T.S.&D.B.W. B. T. (S)	73 - 107	942.4	966.0	-16.333	2.966	7584
NO.5 T.S.W. B. T. (P)	38 - 73	136.9	140.3	-43.998	12.958	6
NO.5 T.S.W. B. T. (S)	38 - 73	136.9	140.3	-43.998	12.958	6
NO.5 D.B.W. B. T. (P)	37 - 73	818.0	838.5	-44.276	2.134	4769
NO.5 T.S.W. B. T. (S)	38 - 73	136.9	140.3	-43.998	12.958	6
NO.5 D.B.W. B. T. (S)	37 - 73	818.0	838.5	-44.276	2.134	4769
A. P. T. (C)	A.E - 12	325.5	333.6	-83.969	9.466	4379
SUB. T O T A L		11480.6	11767.6			
NO.3 CARGO HOLD (C) (FLOODABLE)	107 - 141	10294.6	10552.0	11.281	8.679	61200
GRAND T O T A L		21775.2	22319.6			

C/H WASHING SLOP TANKS					
COMPARTMENT	LOCATION (FRAME)	CAPACITY (m³)		L.C.G. (m)	V.C.G. (m)
		100%FULL	WEIGHT (ton)		
NO.5 T.S.W.B.T. (P)	38 - 73	136.9	136.9	-43.998	12.958
C/H WASHING HOLDING T.	38 - 73	136.9	136.9	-43.998	12.958
NO.5 T.S.W.B.T. (S)	38 - 73	136.9	136.9	-43.998	12.958
C/H WASHING HOLDING T.	38 - 73	136.9	136.9	-43.998	12.958
T O T A L		273.8	273.8		

MULTIPURPOSE TANKS
 1. A.P.T. : WATER BALLAST TANK & FRESH WATER TANK
 2. NO.5 T.S.W.B.T. (P&S) : WATER BALLAST TANK & C/H WASHING HOLDING TANK

*Notes
 L.C.G. : Longitudinal Center of Gravity from Amidship
 V.C.G. : Vertical Center of Gravity from Baseline
 I.T. : Transverse Moment of Inertial of Free surface in Tank
 CARRIAGE OF CARGO LISTS : BASIC DESIGN PART (Refer to DWG. No. BB203011BB)
 EQUIPMENT LIST : HULL OUTFITTING DESIGN PART (Refer to DWG. No. FB201003FB)
 EQUIPMENT LIST : IN-E.R. : MACHINERY DESIGN PART (Refer to DWG. No. MM208000MB)

FRESH WATER TANKS					
COMPARTMENT	LOCATION (FRAME)	CAPACITY (m³)		L.C.G. (m)	V.C.G. (m)
		100%FULL	WEIGHT (ton)		
F. W. T. (P)	0 - 12	108.9	108.9	-81.879	13.054
F. W. T. (S)	0 - 12	163.2	163.2	-82.052	13.021
D. W. T. (P)	0 - 12	54.3	54.3	-82.400	12.953
SUB. T O T A L		326.4	326.4		
A. P. T. (C)	A.E. - 12	325.5	325.5	-83.969	9.466
GRAND T O T A L		651.9	651.9		

HEAVY FUEL OIL TANKS						
COMPARTMENT	LOCATION (FRAME)	CAPACITY (m³)		L.C.G. (m)	V.C.G. (m)	I.T. (m⁴)
		100%FULL	98%FULL			
NO.1 H. F. O. T. (P)	73 - 107	209.7	205.5	-16.400	13.679	97
NO.2 H. F. O. T. (P)	38 - 73	215.8	211.5	-44.000	13.679	100
NO.2 H. F. O. T. (S)	38 - 73	215.8	211.5	-44.000	13.679	100
NO.3 H. F. O. T. (C)	38 - 41	585.4	573.7	-56.703	8.617	3781
H.F.O. SETT. T.(S)	38 - 40	33.7	33.0	-57.219	9.844	5
H.F.O. SERV. T.(S)	38 - 40	33.7	33.0	-57.219	9.844	5
SUB. TOTAL		1294.1	1268.2	1242.9		
LOW SULP.H.F.O.T.(S)	73 - 107	209.7	205.5	-16.400	13.679	97
H.F.O.SETT.T.(P)(L.SULP.)	38 - 40	25.3	24.8	-57.219	9.844	2
H.F.O.SERV.T.(P)(L.SULP.)	38 - 40	25.3	24.8	-57.219	9.844	2
SUB. T O T A L		260.3	255.1	250.0		
GRAND T O T A L		1554.4	1523.3	1492.8		

GAS OIL TANKS						
COMPARTMENT	LOCATION (FRAME)	CAPACITY (m³)		L.C.G. (m)	V.C.G. (m)	I.T. (m⁴)
		100%FULL	98%FULL			
M.G.O. STOR. T.(P)	26 - 37	71.1	69.7	-62.359	1.027	143
M.G.O. STOR. T.(S)	21 - 37	72.4	71.0	-63.962	1.055	109
M.G.O. SETT. T.(S)	31 - 34	17.8	17.4	-62.394	12.427	2
M.G.O. SERV. T.(S)	34 - 38	24.2	23.7	-59.597	12.409	3
T O T A L		185.5	181.8	163.6		

LUB. OIL TANKS						
COMPARTMENT	LOCATION (FRAME)	CAPACITY (m³)		L.C.G. (m)	V.C.G. (m)	I.T. (m⁴)
		100%FULL	98%FULL			
M/E L.O.STOR.T. (S)	22 - 27	27.5	27.0	-68.401	12.488	6
M/E L.O.SETT.T. (S)	27 - 30	23.6	23.1	-65.587	12.442	6
G/E L.O.STOR.T. (S)	20 - 22	11.2	11.0	-71.578	12.512	2
G/E L.O.SETT.T. (S)	22 - 24	7.0	6.9	-70.000	12.400	0
M/E CYL.O.STOR.T. (P)	32 - 34	26.8	26.3	-62.000	12.400	17
L.S. M/E CYL.O.STOR.T. (P)	32 - 34	26.0	25.5	-61.999	12.411	16
T O T A L		122.1	119.7	107.7		

OTHERS TANKS						
COMPARTMENT	LOCATION (FRAME)	CAPACITY (m³)		L.C.G. (m)	V.C.G. (m)	I.T. (m⁴)
		100%FULL	WEIGHT (ton)			
C. W. T. (C)	7 - 12	12.3	12.3	-79.657	3.593	3
F. O. OVERFLOW T. (S)	34 - 37	13.7	13.7	-59.993	1.067	16
BILGE HOLDING T. (C)	12 - 19	23.7	23.7	-75.039	1.054	27
F. O. DRAIN T. (C)	19 - 20	6.2	6.2	-72.793	1.001	11
L. O. DRAIN T. (S)	19 - 20	1.1	1.1	-72.789	1.527	1
S/T L. O. D. T. (S)	16 - 17	1.3	1.3	-75.191	1.528	1
M/E L.O.SUMP T. (C)	21 - 31	14.2	14.2	-67.647	1.016	7
OILY BILGE T. (P)	21 - 26	12.2	12.2	-69.337	1.167	5
L. O. SLUDGE T. (S)	28 - 32	7.0	7.0	-64.400	6.950	4
F. O. SLUDGE T. (S)	32 - 36	7.0	7.0	-61.200	6.950	4
BLACK SEWAGE HOLDING T.(P)	24 - 25	5.7	5.7	-68.793	8.006	6
GREY SEWAGE HOLDING T.(P)	25 - 27	13.0	13.0	-67.577	7.956	14
T O T A L		117.4	117.4			

PRINCIPAL PARTICULARS	
LENGTH O.A	180.00 m
LENGTH B.P	172.00 m
BREADTH (MLD)	30.00 m
DEPTH (MLD)	14.70 m
DESIGN DRAFT (MLD)	9.00 m
SUMMER DRAFT (EXT)	9.9165 m
MAIN ENGINE	
MAN B&W Licensee 5550MC-C (MK-VII) x 1set	
MCR: 7,900 kW (10,750 ps) x 127.0 rpm	
NCR: 6,715 kW (9,138 ps) x 120.3 rpm	
SERVICE SPEED at NCR with 15% S.M on SCANTLING DRAFT	
14.55 Kts	
CLASSIFICATION	
ABS: +A1 (Bulk carrier, BC-A(Holds 2,4 may be empty), +AMS, +ACCU, CSR, AB-CM, GRAB[20], TCM, UWILD, CRC, CFS, GP, RW, ESP	
COMPLEMENT	25 P + 6 SUEZ CREW

CONFIANCE		BB - 08
HULL NO.	H-4038	IMO 9485899
SHIP TYPE	DWT 35,000 TON CLASS BULK CARRIER	
APPROVED : C.H. SONG	TITLE	
APPROVED : T.W. KIM	CAPACITY PLAN WITH DWT SCALE	
CHECKED : J.H. KIM	DRAWN : J.B. LEE	
DATE : 2011.09.01	SCALE : 1/300	CLASS : ABS
	DESIGNER : SPP	DWG NO. : DB203021DB
	BUILDER : SPP SHIPBUILDING CO., LTD.	REV. NO. : /A