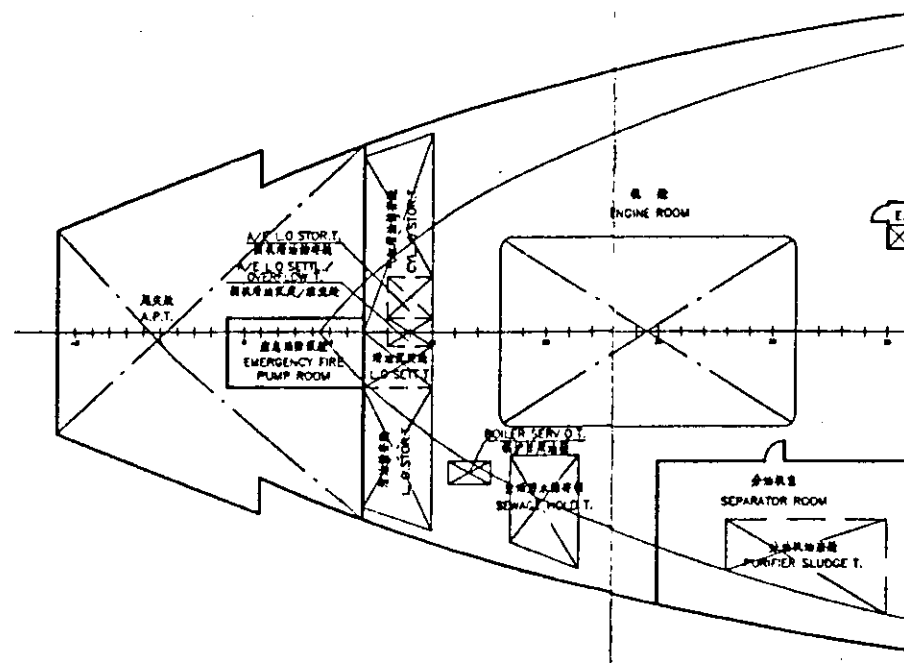
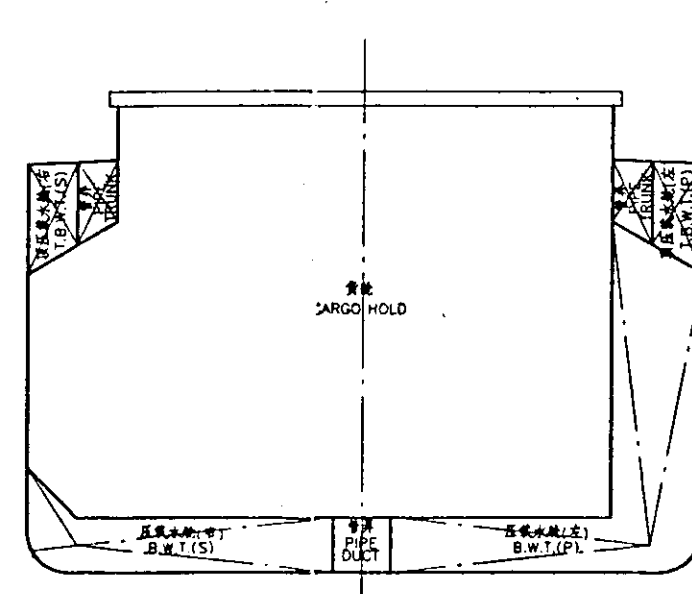
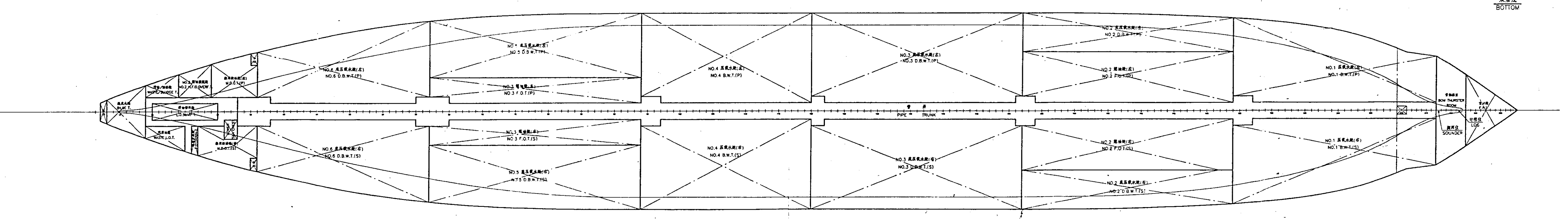
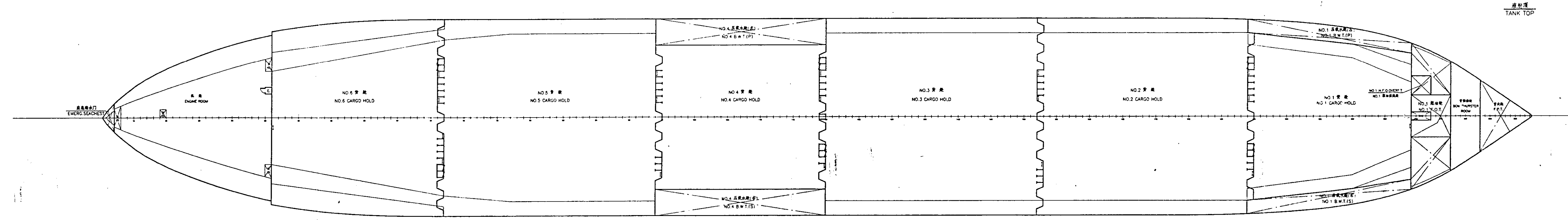
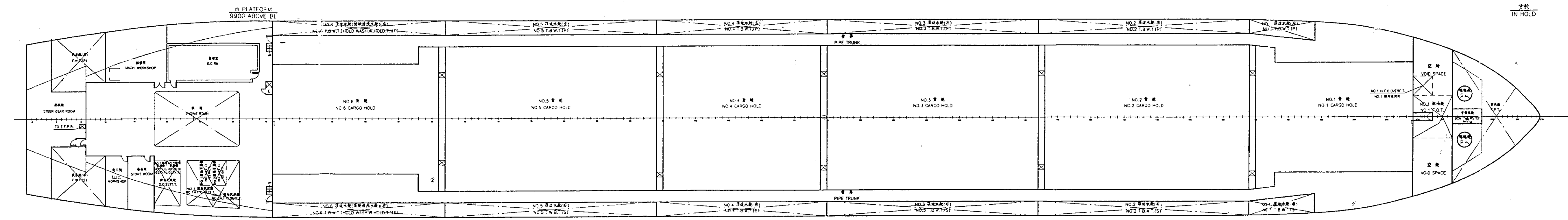
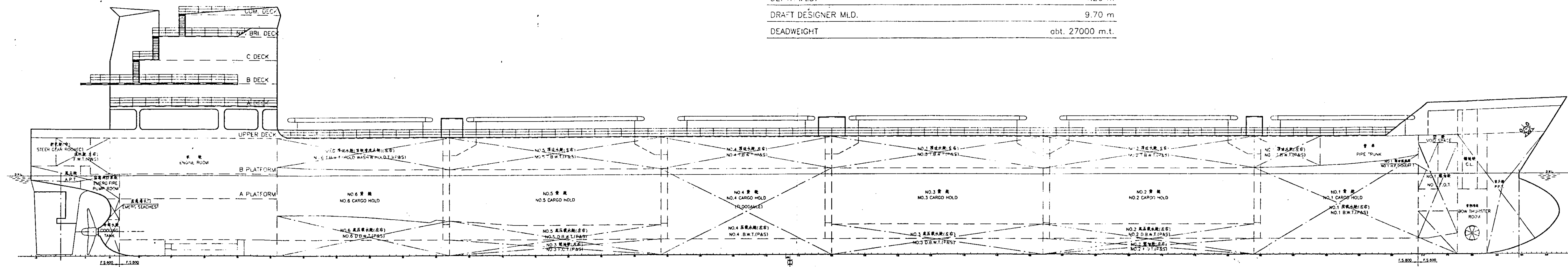


PRINCIPAL PARTICULARS

LENGTH O.A.	01. 186.405 m
LENGTH B.P.	177.00 m
BREADTH MLD.	23.70 m
DEPTH MLD.	14.20 m
DBATT DESIGNER MLD.	9.70 m
DEADWEIGHT	01. 27000 m.t.



LOAD LINE	FREEBOARD FROM DECK MARK (m)	DRAFT (MOULD) (m)	DISPLACEMENT (t)	DEADWEIGHT (t)
TROPICAL FRESH (TF)	4.093	10.127	+35683.6	27521.8
FRESH WATER (F)	4.295	9.925	+34912.9	26751.1
TROPICAL (T)	4.318	9.902	35695.9	27534.1
SUMMER (S)	4.520	9.700	34909.0	26747.2
WINTER (W)	4.722	9.498	34124.8	25963.0

Note: (A) Light ship: 8161.8t
 (B) --- Specific gravity 1.000
 other --- Specific gravity 1.025

MISCELLANEOUS

NO.	COMPARTMENT	FRAME NO.	CAPACITY (m³)	WEIGHT (t)	CENTER OF GRAVITY (m)			MAX. FREE SURFACE
					VERT. (IBL)	LONG. (AP.)	TRANS. (C.L.)	
1	洗滌機 (W.C. TANK)	#13 ~ #19	28.8	1.17	10.75	0.00	42	
2	廢渣泥漿池 (PURIFIER SLUDGE T.S.)	#28 ~ #35	15.4	8.27	23.15	7.73	9	
2	洗滌機 (WASTE L.O. TANK (S))	#19 ~ #25	12.0	1.25	15.59	2.59	6	
2	洗滌機 (WASTE L.O. TANK (S))	#19 ~ #24	9.2	1.26	15.09	-2.53	4	
2	洗滌機 (WASTE L.O. TANK (S))	#26 ~ #27	3.5	1.16	18.81	3.00	3	
2	洗滌機 (COOLING WATER TANK)	A ~ #12	9.5	2.72	6.37	0	1	
TOTAL								

UB OIL TANKS

NO.	COMPARTMENT	FRAME NO.	CAPACITY (100%) (98%) (m³)	WEIGHT (t)	CENTER OF GRAVITY (m)			MAX. FREE SURFACE	
					VERT. (IBL)	LONG. (AMD)	TRANS. (C.L.)		
1	洗滌機 (L.O. STOR. T. (S))	#12 ~ #15	15.9	15.6	14	8.34	8.50	3.53	16
2	洗滌機 (L.O. STOR. T. (S))	#20 ~ #30	111.1	11.0	9.9	1.10	12.60	0.00	5
3	洗滌機 (L.O. STOR. T. (S))	#13 ~ #15	5.4	5.3	4.7	6.08	8.80	-1.20	1
4	洗滌機 (L.O. STOR. T. (S))	#12 ~ #15	9.0	8.8	7.9	8.08	8.32	1.10	1
5	洗滌機 (L.O. STOR. T. (S))	#12 ~ #15	19.5	19.2	17.2	8.29	8.33	-3.05	29
6	洗滌機 (L.O. STOR. T. (S))	#13 ~ #15	3.7	3.6	3.2	8.08	8.80	0.00	1
TOTAL									

CARGO HOLD

NO.	COMPARTMENT	FRAME NO.	CAPACITY (m³)		CENTER OF GRAVITY (m)			MAX. FREE SURFACE
			GRAN.	BALE	VERT. (IBL)	LONG. (AP.)	TRANS. (C.L.)	
1	No.1 貨艙 (No.1 CARGO HOLD)	#184 ~ #209	4375.0	4263.4	8.6'	154.3'	0	
2	No.2 貨艙 (No.2 CARGO HOLD)	#152 ~ #184	7154.8	7011.0	8.35	132.31	0	
3	No.3 貨艙 (No.3 CARGO HOLD)	#119 ~ #152	7385.4	7198.0	8.31	136.40	0	
4	No.4 貨艙 (No.4 CARGO HOLD)	#84 ~ #119	4555.4	4547.1	8.40	85.20	0	
5	No.5 貨艙 (No.5 CARGO HOLD)	#52 ~ #84	7304.8	7101.1	8.31	132.31	0	
5	No.6 貨艙 (No.6 CARGO HOLD)	#36 ~ #52	5289.9	5150.0	8.50	126.70	0	
TOTAL								

BALLAST WATER TANKS

NO.	COMPARTMENT	FRAME NO.	CAPACITY (m³)	WEIGHT (t)	CENTER OF GRAVITY (m)			MAX. FREE SURFACE
					VERT. (IBL)	LONG. (AP.)	TRANS. (C.L.)	
1	No.1 壓艙水艙 (No.1 B.W.T. (P&S))	#217 ~ #217	583.4	598.0	9.36	173.90	0.000	0.000
2	No.2 壓艙水艙 (No.2 B.W.T. (P&S))	#184 ~ #184	24792.6	24792.6	1.21	121.47	± 7.12	24132.2
3	No.3 壓艙水艙 (No.3 B.W.T. (P&S))	#152 ~ #152	24209.8	24209.8	1.21	121.47	± 9.53	24197.0
4	No.4 壓艙水艙 (No.4 B.W.T. (P&S))	#120 ~ #120	24539.8	24539.8	1.07	106.45	± 6.65	24270.0
5	No.5 壓艙水艙 (No.5 B.W.T. (P&S))	#84 ~ #84	24101.0	24101.0	1.12	112.00	± 8.66	24192.0
6	No.6 壓艙水艙 (No.6 B.W.T. (P&S))	#52 ~ #52	24358.7	24358.7	1.12	112.00	± 7.90	24221.0
7	No.7 壓艙水艙 (No.7 B.W.T. (P&S))	#36 ~ #36	24344.0	24344.0	1.39	139.49	± 5.63	24102.0
8	No.8 壓艙水艙 (No.8 B.W.T. (P&S))	#184 ~ #184	2445.3	2445.3	12.69	148.91	± 10.69	246.0
9	No.9 壓艙水艙 (No.9 B.W.T. (P&S))	#152 ~ #152	24145.8	24145.8	12.56	131.95	± 11.01	242.0
10	No.10 壓艙水艙 (No.10 B.W.T. (P&S))	#120 ~ #120	24145.5	24145.5	12.56	106.40	± 11.02	242.0
11	No.11 壓艙水艙 (No.11 B.W.T. (P&S))	#84 ~ #84	24119.0	24119.0	12.56	83.20	± 11.02	241.0
12	No.12 壓艙水艙 (No.12 B.W.T. (P&S))	#52 ~ #52	24146.5	24146.5	12.56	60.00	± 11.02	241.0
13	No.13 壓艙水艙 (No.13 B.W.T. (P&S))	#36 ~ #36	24115.7	24115.7	12.59	37.02	± 10.99	249.0
14	洗滌機 (A.P.T.)	A ~ #12	139.6	143.1	9.65	2.34	-0.15	650.0
TOTAL								

FRESH AND FEED WATER TANKS

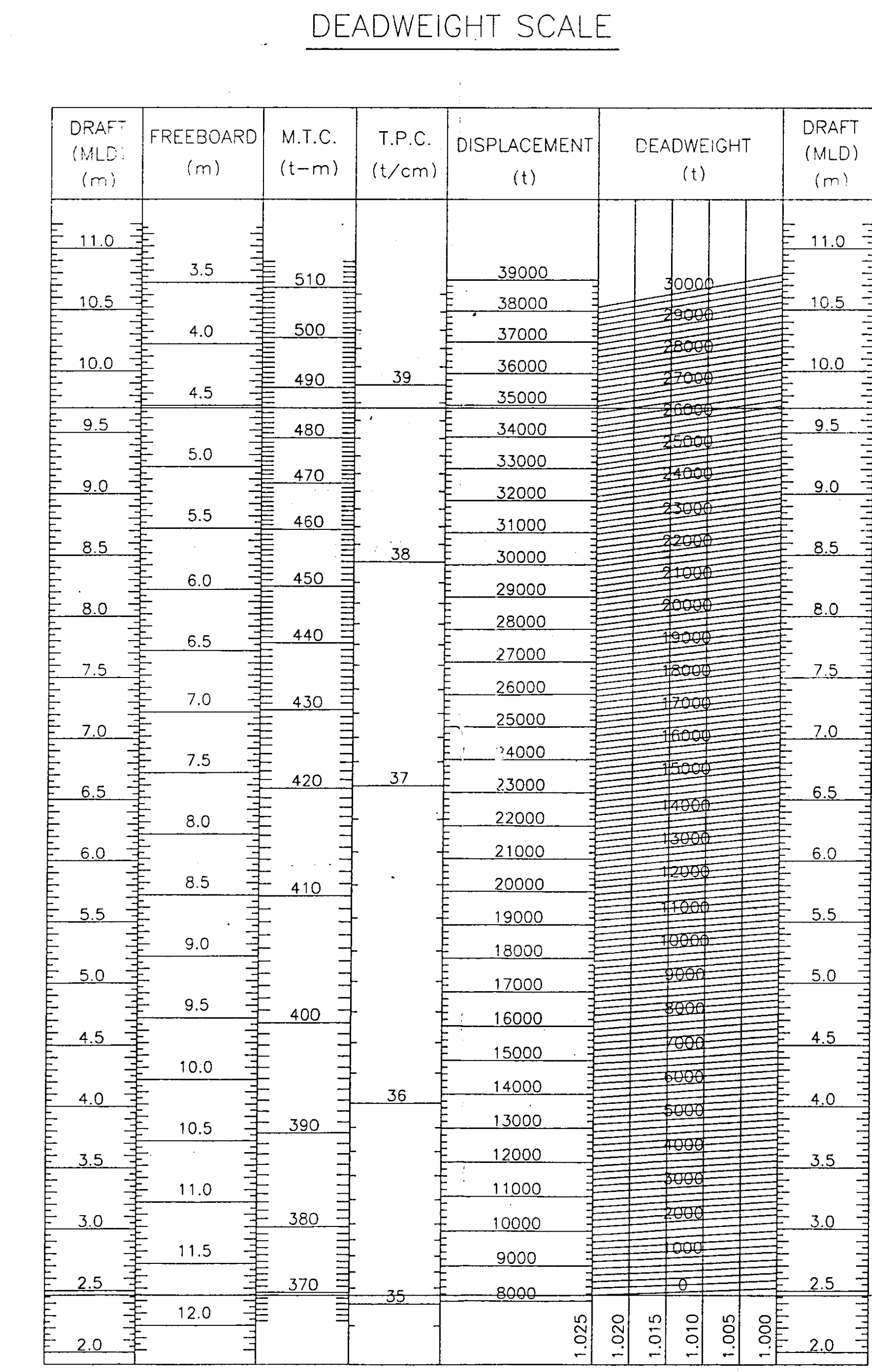
NO.	COMPARTMENT	FRAME NO.	CAPACITY (m³)	WEIGHT (t)	CENTER OF GRAVITY (m)			MAX. FREE SURFACE
					VERT. (IBL)	LONG. (AP.)	TRANS. (C.L.)	
1	洗滌機 (F.W.T. (P&S))	#1 ~ #10	24106.8	24106.8	12.85	2.78	± 6.02	24133.0
TOTAL								

FUEL OIL TANKS

NO.	COMPARTMENT	FRAME NO.	CAPACITY (100%) (98%) (m³)	WEIGHT (t)	CENTER OF GRAVITY (m)			MAX. FREE SURFACE	
					VERT. (IBL)	LONG. (AMD)	TRANS. (C.L.)		
1	No.1 燃油艙 (No.1 F.O.T. (P&S))	#209 ~ #217	242.4	237.5	234.0	7.66	167.31	-0.06	50.8
2	No.2 燃油艙 (No.2 F.O.T. (P&S))	#152 ~ #184	24290.2	24284.4	24280.1	0.93	132.14	± 4.11	2478.0
3	No.3 燃油艙 (No.3 F.O.T. (P&S))	#84 ~ #84	24143.4	24140.5	24138.4	0.93	60.28	± 5.73	2459.0
4	No.4 燃油艙 (No.4 F.O.T. (P&S))	#25 ~ #27	16.9	16.6	16.3	11.66	18.40	6.50	4
5	No.5 燃油艙 (No.5 F.O.T. (P&S))	#27 ~ #29	16.9	16.6	16.3	11.66	20.00	6.50	4
6	No.6 燃油艙 (No.6 F.O.T. (P&S))	#23 ~ #27	32.6	32.0	31.5	11.83	17.23	7.53	24
7	No.7 燃油艙 (No.7 F.O.T. (P&S))	#27 ~ #31	39.4	38.6	38.0	11.78	21.19	7.67	31
8	No.8 燃油艙 (No.8 F.O.T. (P&S))	#209 ~ #213	10.1	10.0	9.8	14.03	166.40	-1.27	4.4
9	No.9 燃油艙 (No.9 F.O.T. (P&S))	#24 ~ #29	17.5	17.2	16.9	1.16	18.86	-3.03	14
TOTAL									

DIESEL OIL TANKS

NO.	COMPARTMENT	FRAME NO.	CAPACITY (100%) (98%) (m³)	WEIGHT (t)	CENTER OF GRAVITY (m)			MAX. FREE SURFACE	
					VERT. (IBL)	LONG. (AMD)	TRANS. (C.L.)		
1	洗滌機 (D.O.T. (P))	#29 ~ #36	36.9	36.2	32.6	1.08	23.84	-3.58	40
2	洗滌機 (D.O.T. (P))	#27 ~ #36	41.5	40.7	36.6	1.12	23.14	3.89	45
3	洗滌機 (D.O.T. (P))	#18 ~ #20	3.8	3.7	3.3	12.64	12.80	5.80	1
4	洗滌機 (D.O.T. (P))	#20 ~ #22	3.8	3.7	3.3	12.64	14.40	5.80	1
5	洗滌機 (D.O.T. (P))	#18 ~ #22	44.0	43.1	38.8	11.62	13.64	7.65	27
6	洗滌機 (D.O.T. (P))	#18 ~ #18	1.2	1.2	1.0	7.39	10.80	5.25	1
TOTAL									



LIGHT SHIP
 D=8161.8t
 d=2.464m

SHIP'S NAME : BLUEWING
 DESIGNER : MARIC
 OWNER : Navatone S.A.
 SHIP'S NO. : 81072104

BUILDER	WUHU SHIPYARD
DESIGNER	MARINE DESIGN & RESEARCH INSTITUTE OF CHINA
FORTUNE MARK II SERIES 27000 DWT BULK CARRIER	
FINAL DESIGN	
FG427.013	
CAPACITY PLAN WITH DEADWEIGHT SCALE	
MARIC	